

# Timestep RA Turntable

## 14 - 170 rpm



Restoring records can be difficult, especially if they run at a non-standard speed.

Now for the first time you can have a direct drive turntable with totally accurate digital readout.

Speed selection can be with the preset buttons, by a large rotary knob and also with up/down buttons.

The readout and resolution are both 0.01 rpm, Fine speed is set to 0.01 rpm increments and coarse/fast speed is set in 1 rpm increments.

Custom versions are available and the firmware is updateable on the fly. We fit a brand new SME M2-9R tonearm, others are available.

This is not a power supply, it is a DDS (Direct Digital Synthesiser) PLL (Phase Locked Loop) control system for the Technics SL-1200 and other turntables.

We can modify your own turntable or supply an as-new one with a 6 year warranty. You can also fit this yourself to your turntable, it just needs 4 non-invasive soldered joints.

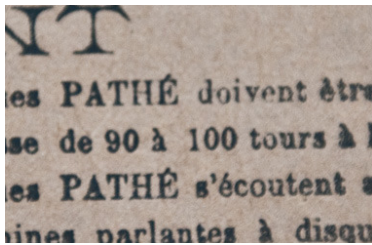
This speed controller is completely silent in operation and if anything improves on the already legendary performance of the Technics.

You will be surprised at the performance of this system, no hum or buzz, instantaneous response and absolutely no speed deterioration due to stylus drag.

As an option we can fit an extra internal power supply to also power the SL-1200 using a single umbilical cable. This reduces still further any noise by removing the transformer vibration and eliminating the electrical hum field. The transformer is custom wound for us.

A linear power supply is used which is user configurable to operate anywhere in the world on both 50 and 60Hz and from 90 to 260V.





90 -100 rpm



80 rpm??



76 rpm



84 rpm

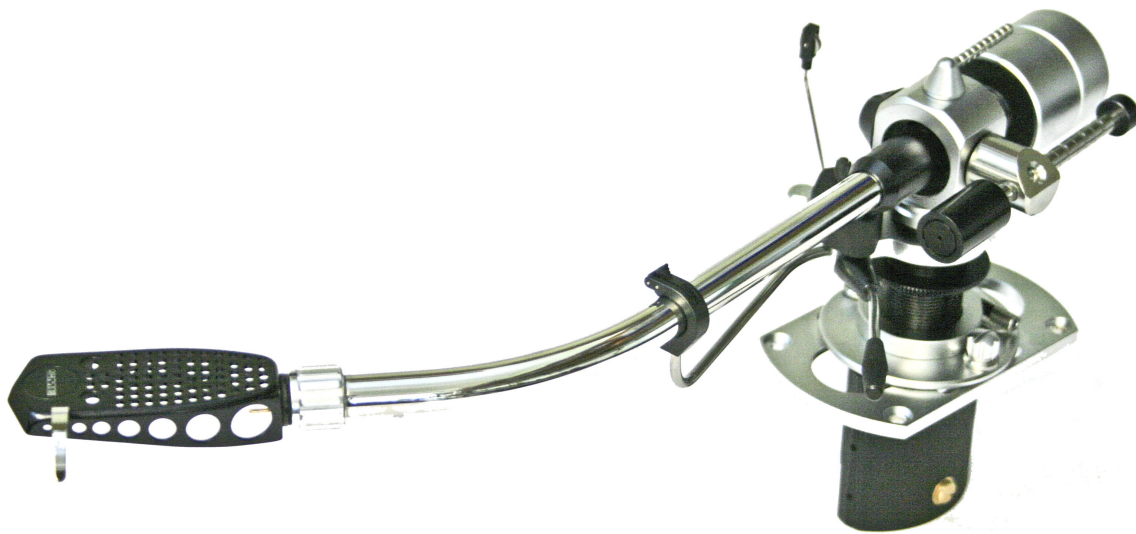


80 rpm



78.26 rpm

Now you can easily play these and more. The difference in perceived sound and rhythm is quite profound with just a 2 rpm difference. You can set the precise speed and be quite sure. Some records aren't actually recorded to a known standard and using the variable speed/pitch rotary control, the speed can be set by ear.



This may look like an old SME arm?

In fact it is a brand new SME M2-9R with ABEC 7 bearings on a gimbal, no old knife edge bearings here! Using the traditional SME detachable headshell allows quick and easy cartridge change. Pure copper headshell weights are available so that the tracking weight is easily adjusted, just change the headshell to the new cartridge with the appropriate weight fitted, no adjustments necessary.

Now you can have everything in one archival turntable, accuracy, adjustable and repeatable speed,

**Timestep, PO Box 2001, Dartmouth, Devon, TQ6 9QN, United Kingdom**

**Web site: [www.time-step.com](http://www.time-step.com)**

**email: [sales@time-step.com](mailto:sales@time-step.com)**

**Tel: USA 011 44 1803 833366 International +44 1803 833366 UK 01803 833366**