

Fig. 1

PARTS LIST

- 1 Headshell
- 2 Armtube
- 3 Bearing housing
- 4 Bearing
- 5 1/8" wht x 1/8 set screw
- 6 GH Uni-lift assembly
- 7 Small weight
- 8 Weight support
- 9 Arm rest
- 10 Pulley wheel
- 11 Large weight
- 12 Lift platform
- 13 Bias rod support
- 14 Bias spacer
- 15 2.5 x 16 Socket cap screw
- 16 Bias rod support assembly
- 17 6 BA x 1/4" set screw
- 18 Bias weight
- 19 Bias rod for thread
- 20 Pivot pin / lever
- 21 Pivot support
- 22 Arm base flange
- 23 GH Uni-lift finger nob
- 24 5/8" UNF 1+1 nut brass
- 25 5/8" brass washer x 35mm
- 26 Headshell lever 157mm
- 27 4BA x 3/16 set screw
- 28 4BA x 1/4 set screw
- 29 2.5mm x 6 brass screws
- 30 2.5mm x 12 brass screws
- 31 Red plug / socket
- 32 .050" allen key
- 33 1/16" allen key
- 34 2.0mm allen key
- 35 Box set (including foam)
- 36 Set of instructions GH 242
- 37 Set of instructions GH 228
- 38 Arm tube GH 242
- 39 Arm tube GH 228

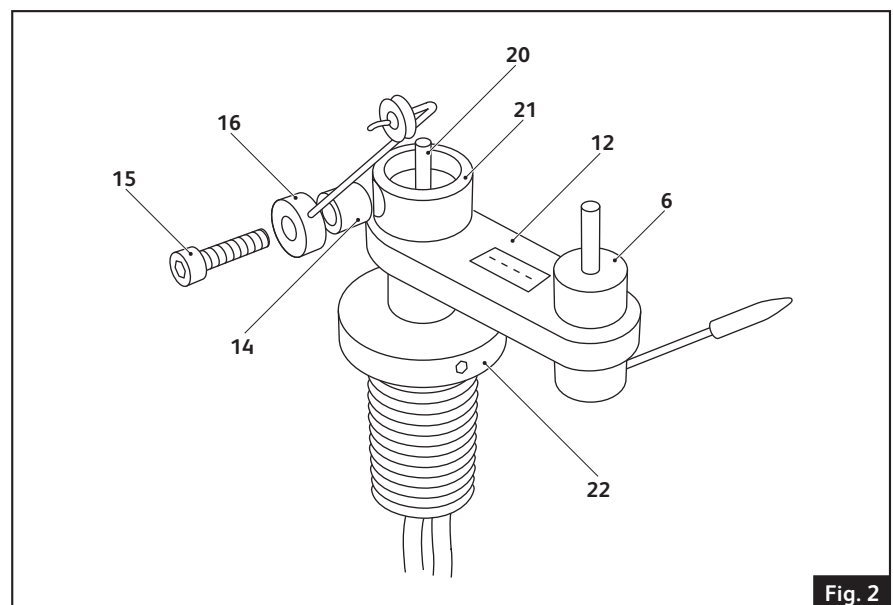


Fig. 2

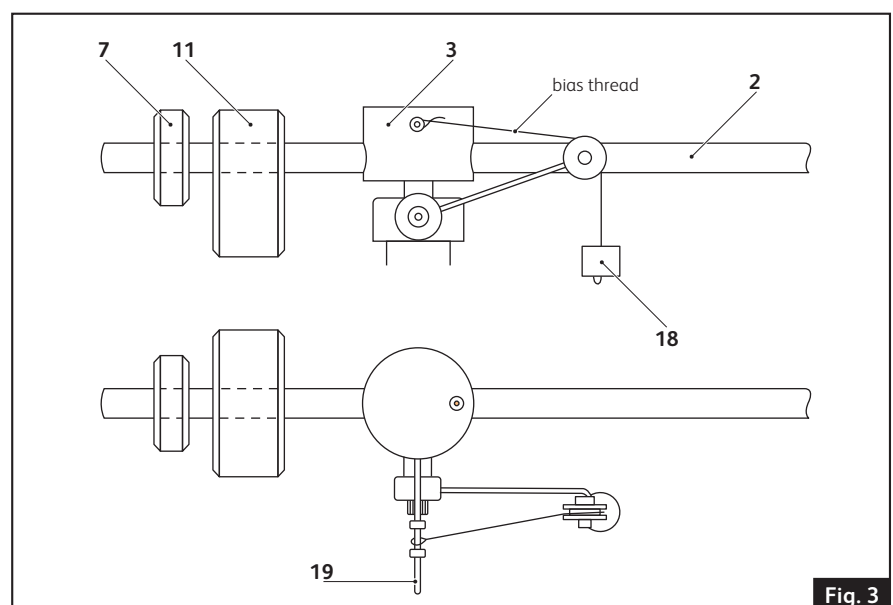


Fig. 3